



## Use op-amp injection for Bode analysis

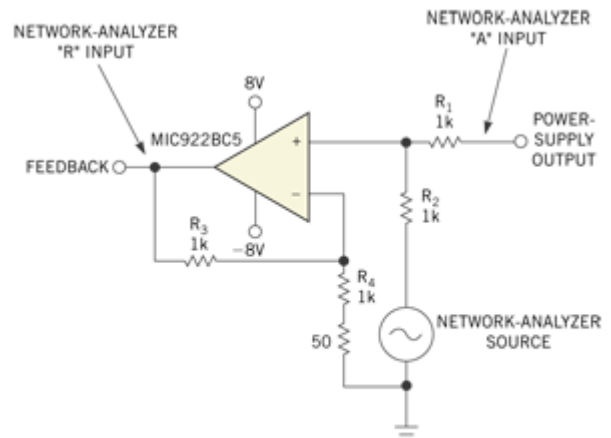
by Martin Galinski, Micrel Semiconductor, San Jose, CA  
EDN

Bode analysis is an excellent way to measure small-signal stability and loop response in power-supply designs. Bode analysis monitors gain and phase of a control loop. It performs this monitoring by breaking the feedback loop and injecting a signal into the feedback node and then comparing the injected signal with the output signal of the control loop. The method requires a network analyzer to sweep the frequency and compare the injected signal with the output signal.

The most common method of injection is the use of transformer. **Figure 1** demonstrates how a transformer injects a signal into the feedback network. A 50v resistor affords impedance matching to the network-analyzer source. This method allows the dc loop to maintain regulation and allows the network analyzer to insert an ac signal on the dc voltage.

The network analyzer then sweeps the source while monitoring A (voltage channel) and R (reference channel) for an A/R-ratio measurement. Although this method is the most common for measuring the gain and phase of a power supply, it has significant limitations.

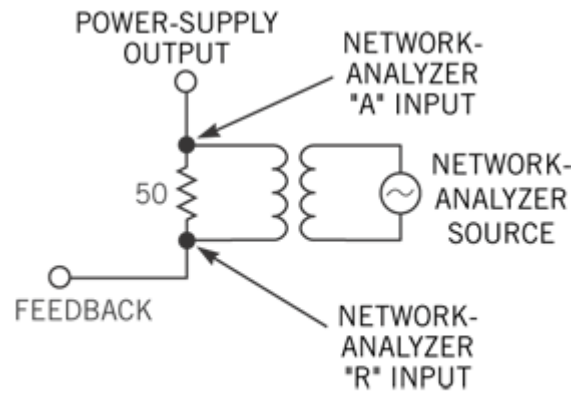
First, to measure low-frequency gain and phase, the transformer needs high inductance. Frequencies lower than 100Hz, therefore, require a large and expensive transformer.



**Figure 1: Bode analysis using transformer injection yields gain and phase information in a control loop.**



Also, the transformer must be able to inject high frequencies. Transformers with these wide frequency ranges generally are custom-made and usually cost several hundred dollars. By using an op amp, you can avoid the cost and frequency limitations of an injection transformer. **Figure 2** demonstrates the use of an op amp in a summing- amplifier configuration for signal injection. R1 and R2 reduce the dc voltage from the output to the non-inverting input by half. The network analyzer is generally a 50v source.



**Figure 2: Op-amp injection is a good alternative to transformer-based injection and has no minimum-frequency limitation.**

R1 and R2 also divide the ac signal from the network analyzer by half. These two signals "sum" together at half their original input. The output then gains up by a factor of two by R3 and R4 and goes to the feedback output. (The 50v resistor balances the network analyzer's source

impedance.)

This action essentially breaks the loop and injects the ac signal on top of the dc output voltage and sends it to the feedback terminal. By monitoring the feedback terminal (R) and output terminal (A), the analyzer measures gain and phase. This method has no minimum frequency. Make sure that the bandwidth of the op amp is much greater than the expected bandwidth of the power supply's control loop. An op amp with at least 100MHz bandwidth is more than adequate for most linear and switching power supplies.

**Print**